

NZX Resources & Exploration Investor Day
24 April 2026

'Mine to market'

**Significant high-grade deposits of critical minerals essential for modern life.
Iwi and community support, resource consent to production.**

Important Information and Disclaimer

General Information

This document is authorised for release by the board of directors of Taiko Critical Minerals Limited (**Tāiko**).

General disclaimer

This presentation contains forward-looking statements. Forward-looking statements often include words such as “anticipate”, “expect”, “intend”, “plan”, “believe”, “guidance” or similar words in connection with discussions of future operating or financial performance. These forward-looking statements are based on management and directors’ current expectations and assumptions regarding Tāiko’s businesses and performance, the economy and other future conditions, circumstances and results. As with any projection or forecast, forward-looking statements are inherently susceptible to uncertainty and changes in circumstances, many of which are out of the control of Taiko and its directors. Taiko’s actual results may vary materially from those expressed or implied in its forward-looking statements. While Tāiko considers these expectations and assumptions to be reasonable, investors should note that the development of the project is subject to a number of key factors, including the completion of technical studies, securing funding and obtaining required regulatory approvals. There can be no assurance that these factors will be satisfied. Taiko, its directors, employees and/or shareholders shall have no liability whatsoever to any person for any loss arising from this presentation or any information supplied in connection with it. Tāiko is under no obligation to update this presentation, or the information contained in it after it has been released. No part of this presentation, or the receipt of it by any person, constitutes an offer or part of an offer of financial products or securities or any of the assets described in this presentation. This is not a product disclosure statement or any other form of disclosure document under any applicable law and does not and will not form any part of any contract for the acquisition of shares in Tāiko. This presentation does not grant any recipient exclusivity. Nothing in this presentation constitutes financial, legal, tax or other advice.

Project development and timing

Any references to development pathways, timelines, production targets or commercial outcomes are indicative only and are based on current expectations. Actual timing and outcomes may vary depending on technical, regulatory, funding and market conditions.

Financial Information

Any financial information included in this presentation (including any references to net present value (NPV), internal rate of return (IRR), capital expenditure or payback periods) is based on preliminary or draft studies, including the 2022 draft Preliminary Feasibility Study, and is provided for illustrative purposes only. Such information should not be relied upon as a definitive assessment of the project’s economic viability.

Mineral Resources Estimates

All references to mineral resource estimates should be read in conjunction with Taiko’s NZX announcement – “Listing Profile – Taiko Critical Minerals Limited” reported on 5 March 2026 and the RSC report titled *Initial Mineral Resource Estimate for the Barrytown Critical Minerals Project -20 January 2026, completed by RSC under the supervision of Mr Rene Sterk*, which can be found at [www.taikocm.co.nz/mineral-resource-information - Mineral Resource Statement \(MRS\)](http://www.taikocm.co.nz/mineral-resource-information - Mineral Resource Statement (MRS)). All disclosures made in this document with reference to mineral resources estimates are quoted as per those documents. Taiko confirms that it is not aware of any new information or data that will or may materially affect the information included in this market announcement. In the case of mineral resource estimates, all material assumptions and technical parameters underpinning the estimates continue to apply and have not materially changed since the 20 January 2026 report or the 5 March 2026 announcement.



Important Information and Disclaimer

Competent Person

The information in this presentation that relates to mineral resources is based on work completed by RSC under the supervision of Mr René Sterk, a Competent Person who is a Fellow and a Chartered Professional with the Australasian Institute of Mining and Metallurgy (AusIMM) and a Registered Professional Geologist with the AIG. He is a full-time employee and principal geologist of RSC. René holds an MSc in structural geology and tectonics from the Vrije Universiteit Amsterdam (2002) and is the managing director of RSC. He specialises in resource estimation, grade control, reconciliation, QA/QC and successful sampling and has a strong skill set in exploration management for gold and base metals. René is recognised under the JORC Code as a Competent Person for gold (alluvial, shear-zone and porphyry), base metals, seabed mineralisation, and industrial minerals (ilmenite sand, garnet sand, diatomite). René is the principal author of many Canadian NI 43-101 and JORC resource and exploration studies and has assisted clients with exploration programmes for these and other projects. He has practised continuously as a mining geologist, exploration geologist, manager and consultant for mining and exploration firms in a range of commodities since 2003. Mr Sterk has sufficient experience that is relevant to the style of mineralisation and type of deposit under consideration and to the activity being undertaken to qualify as a Competent Person as defined in the 2012 Edition of the 'Australasian Code for Reporting of Exploration Results, Mineral Resources and Ore Reserves' (JORC Code, 2012).

Public disclosures

This presentation should be read in conjunction with Tāiko's NZX announcements. It is not intended to provide a comprehensive overview of all material information relating to Tāiko and should not be relied upon as a substitute for those disclosures.

About critical minerals

- Essential to modern technologies and future economies
- ‘Critical’ because vital for high-tech, clean energy, industrial and everyday use
- NZ has a list of 37 minerals critical minerals
- High risk of supply disruption
- Markets are specialised, diverse and opaque
- No easy substitutes
- Grade quality is key

- Garnet
- Ilmenite
- Rutile
- Zircon
- Monazite

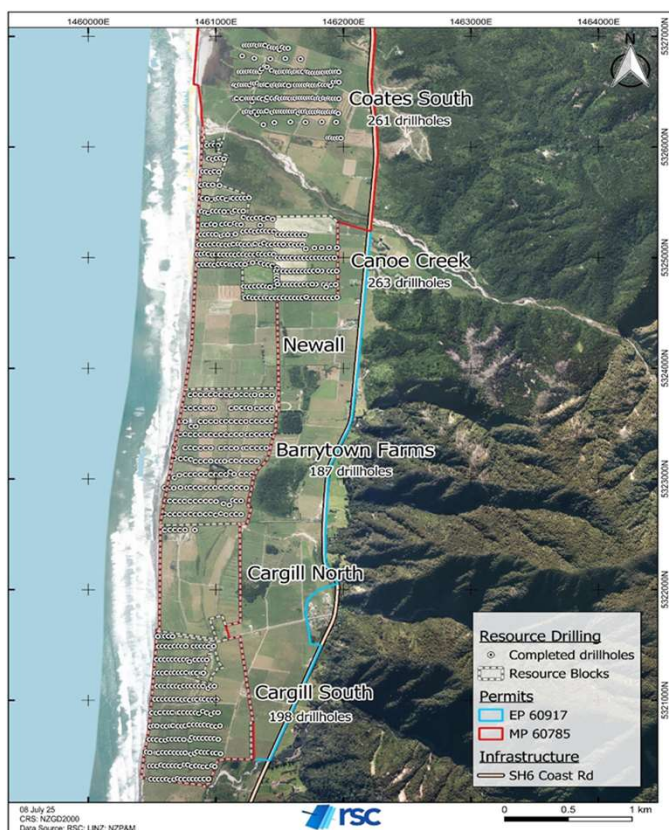


‘Rehabilitative mining’

- 8 years iwi & community engagement
- Surgical extraction – 4ha impact
- Continuous rehabilitation
- Infrastructure resilience – electricity, housing, workforce
- Leveraging industry expertise for local & national gain
- A legacy for the West Coast



Extensive drilling – current and pending results



Current exceptional results:

Deposit	Category	Mass (Mt)	Sand (%)	Sand (Mt)	In-Situ Grade (%)					Material Content (Kt)				
					Ilmenite	Garnet	Zircon	VHM	THM	Ilmenite	Garnet	Zircon	VHM	THM
Barrytown Farms	Measured	7.7	80.3	6.2	7.8	10.6	0.2	18.7	24.9	610	820	15	1,440	1,924
	Indicated	5.8	76.0	4.4	9.2	12.2	0.2	21.6	28.5	530	710	10	1,250	1,646
	Total	13.5	78.5	10.6	8.4	11.3	0.2	19.9	26.4	1,140	1,530	25	2,690	3,570
Coates South	Measured	4.61	68.3	3.1	5.2	7.8	0.10	13.2	20.5	242	362	4	608	948
	Indicated	3.79	66.4	2.5	5.0	6.4	0.09	11.5	18.7	188	245	4	436	711
	Total	8.41	67.4	5.7	5.1	7.2	0.09	12.4	19.7	430	606	8	1,044	1,659

Source – Initial Mineral Resource Estimate for the Barrytown Critical Minerals Project -20 January 2026
Refer to www.taikocm.co.nz/mineral-resource-information - Mineral Resource Statement (MRS)

Pending results:

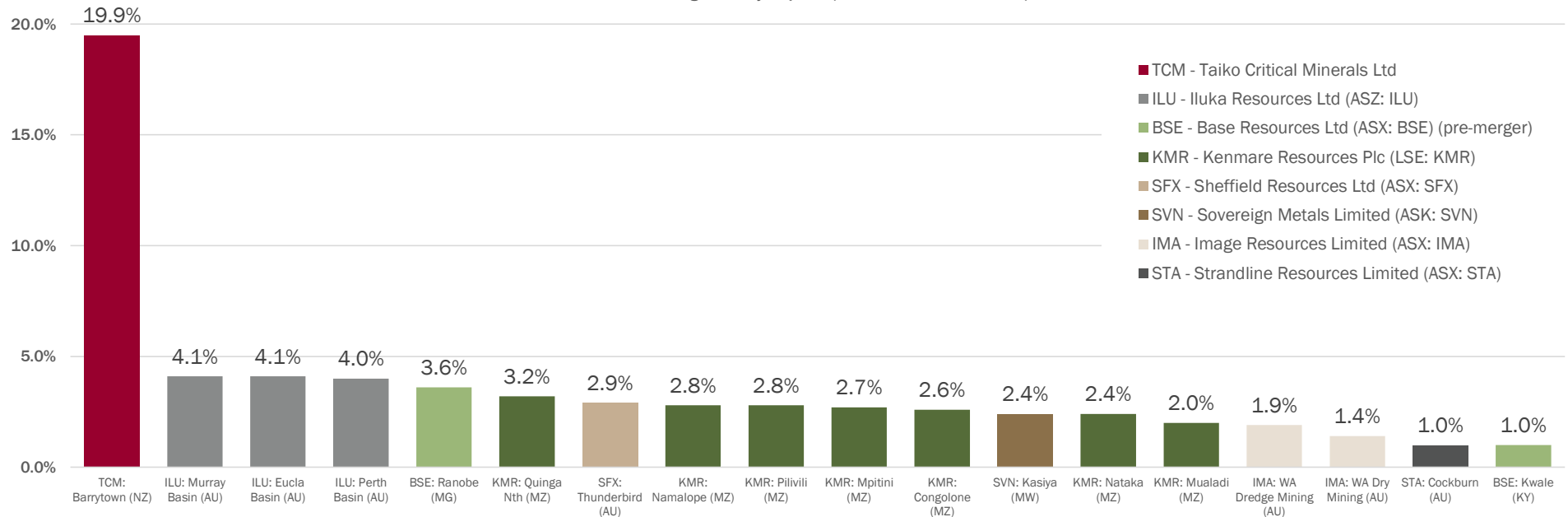
Canoe Creek – 4,000 metres of drilling completed, testing and reporting to JORC Measured and Indicated Category underway

Cargill South – 2,900 metres of drilling completed, testing and reporting to JORC Measured and Indicated Category underway

Tāiko critical minerals – stands tall in its peer group

WORLD MINERAL SANDS DEPOSITS: GRADE COMPARISON

Valuable mineral grades by deposit (JORC Mineral Resources)



Source

Company	Source	Date	Company	Source	Date
Taiko Critical Minerals Limited	Mineral Resource Statement	January 2026	Sovereign Metals Limited	Annual Report 2024	30 June 2024
Iluka Resources Limited	Annual Report 2023	31 December 2023	Image Resources Limited	Annual Report 2023	31 December 2023
Base Resources Limited	Annual Report 2023	30 June 2023	Sheffield Resources Limited	Annual Report 2024	30 June 2024
Kenmare Resources PLC	Annual Report 2023	31 December 2022	Strandline Resources Limited	Annual Report 2024	30 June 2024



Mine to Market Project status

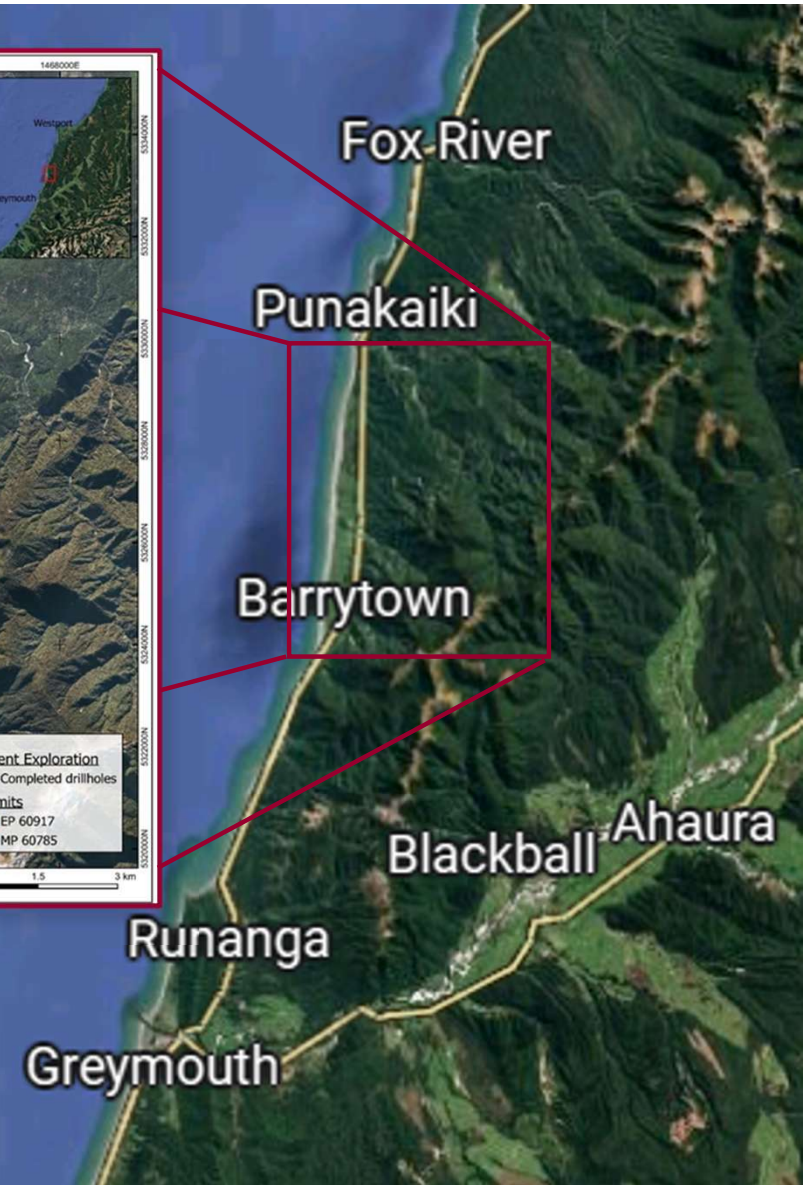
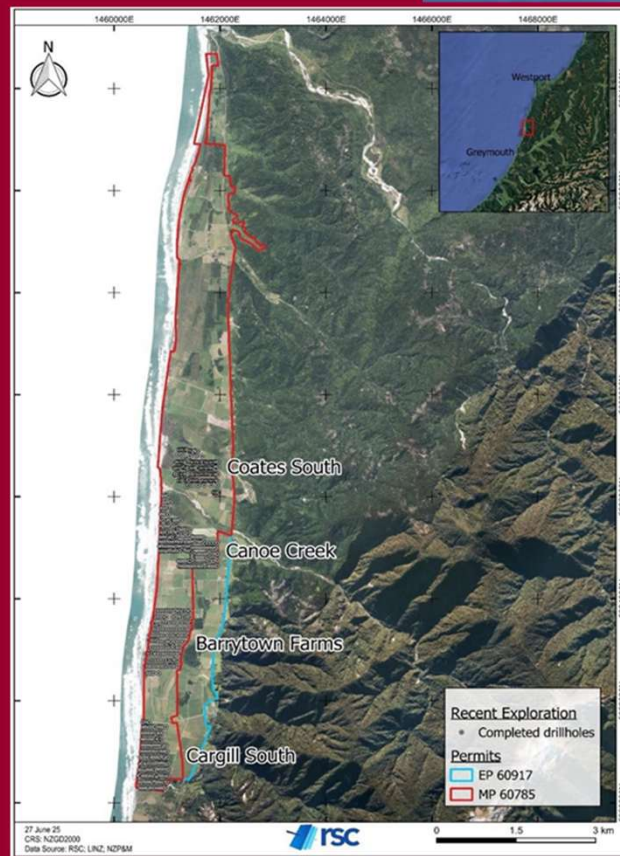
Barrytown Project

- Mineral Permits -1250ha
- Exploration Permit - 245ha
- Private Land Access agreements in place (450ha) and progress to purchase additional (607ha).
- Resource consents - initial 63ha & Wet Concentrator Plant (Coates South Block)
- 12 years - CAPEX \$95m NPV \$243m IRR 35%
- 22 years - Fast Track application - 408ha extension

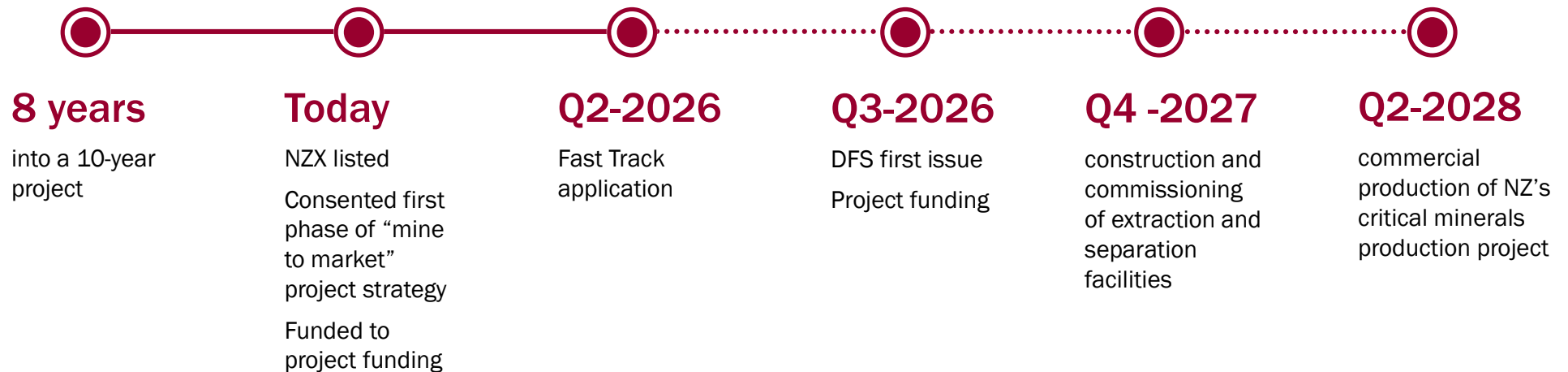
Mineral Separation Plant (MSP)

- Resource consents – unlimited term
- 30-year site lease
- Site - Rail - Ship

Source – NZX:TCM Listing Profile March 2026



Timing



*Dates are indicative only and subject to change dependent on DFS, funding and approvals

Financial overview – maximising value

\$7.9m private placement completed

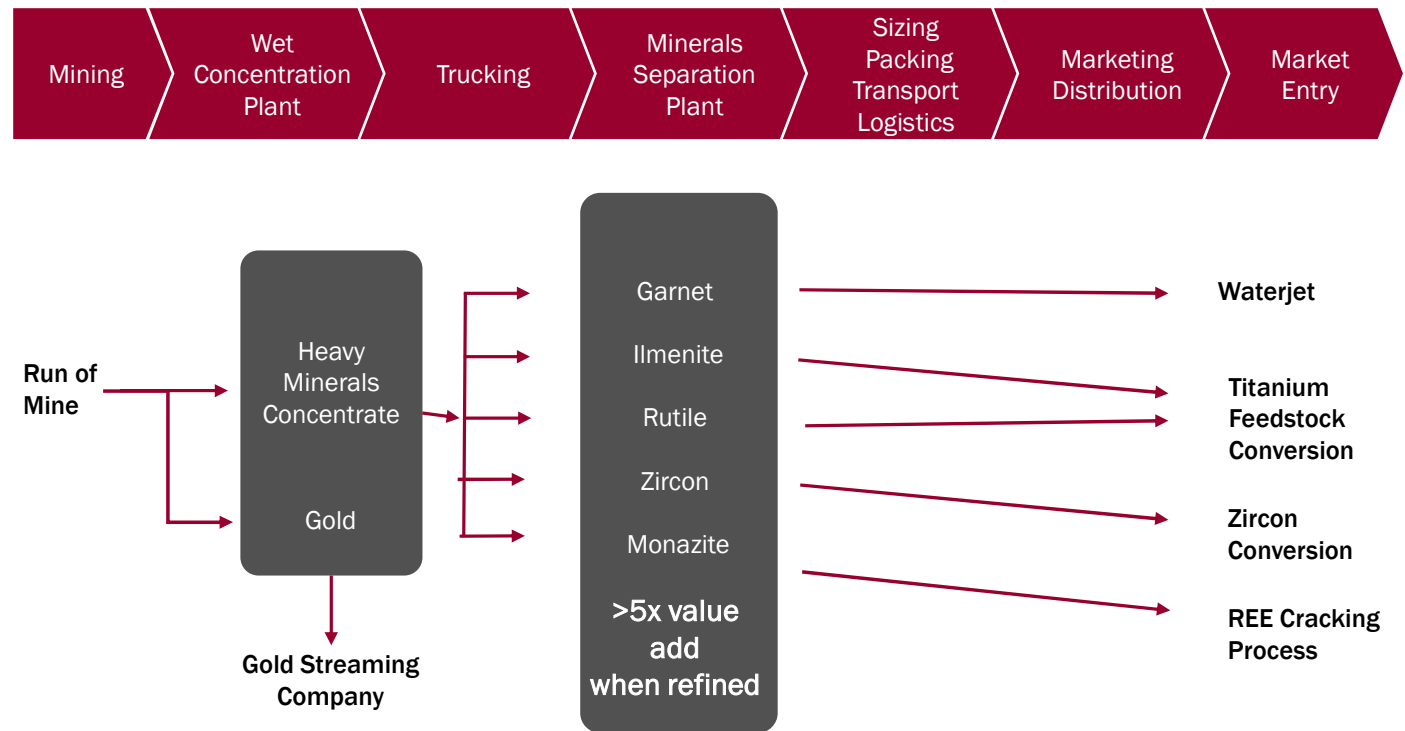
2023 Draft PFS

\$243m After Tax NPV₁₀

35% After Tax IRR

\$95m initial Capex (debt/equity)

4 year Pay Back



Source – NZX:TCM Listing Profile March 2026

*Financial metrics based on preliminary and/or draft technical studies - indicative only and subject to change

Capital Structure

Instrument	Amount
Ordinary Shares	408,596,490
Convertible Notes: \$8,270,000 to be converted to ordinary shares at \$0.11 or 50% of project funding issue price whichever is less, expire 31 December 2027	75,181,818
Performance Rights: Earned but not issued Estimate if earned	10,135,915 5,125,317
Options: 7,000,000 Strike \$0.15 Expiry 31 December 2028.	7,000,000

Market Capitalisation

\$77.63m at 21 April 2026

Source – NZX:TCM Listing Profile March 2026

#	Ordinary Shares	%
1	Ileveter Pty Ltd	23.41%
2	Fundamental Wealth Pty Ltd	11.07%
3	DPXS Pty Ltd	5.57%
4	Philip Hinton & Robin Hinton	5.48%
5	Aspermont Limited	3.62%
	Others	49.15%

#	Options	#
1	Foster Capital (NZ) Limited	5,000,000
2	Directors 4 x 500,000 each	2,000,000
		7,000,000

Experienced Board and Management Team



Phil Thick
Non Executive Chair



Geoff Donohue
Non Executive Director



Christine Pears
Independent Director



Francois Tumahal
Independent Director
Te Rūnanga o Ngāti Waewae Chair



Robert Brand
Chief Executive Officer



Paul Mason
Chief Financial Officer
Company Secretary



Mike Meehan
Project Director



Dave Bougourd
Technical Manager



Andy Farrell
Consultant, Financial Modelling
Project Programing

Expert Advice



Recap

- Significant critical minerals deposits
- Granted resource consents for first phase of “Mine to Market” strategy
- Fast Track to unlock extension of the mine life
- ‘Mine to Market’ strategy for maximum value
- Local and national economic benefits
- Rehabilitative mining – a legacy for the West Coast
- Experienced board and management
- Expert advice at each stage